



LASER STATION

LW3



GRAVOTECH

by  BRADY.



## LASER STATION LW3

The only Gravotech class 1 laser enclosure for large direct part marking. The LW3 brings security and marking versatility to the workplace.



### LARGE MARKING POSSIBILITIES

With its 3-sided door, the LW3 benefits from the best inside height dimensions and can securely envelop and mark parts up to 628 mm high. Thanks to its compatibility with our Fiber, Hybrid, Green or MOPA industrial laser series, the LW3 can mark with high precision nearly every metal or plastic surfaces on its special positioning table.

### VERSATILE

From unique identification marking, to multi-level engraving, and matrix marking on a batch of small to medium parts, this industrial laser station can mark your large part at several positions, and levels. Add a 3D module to your LW3 laser to mark sloped parts.

### INDUSTRY ORIENTED

This laser marking machine is the only large laser engraver of the market with an attached touchscreen allowing the operator to easily manage the direct part marking process. In addition to the easy installation, manutention, and silent/ergonomic door opening, this class 1 laser stands out with its exceptional build quality.

SEE OUR VIDEO



## KEY FEATURES



### Large part marking

The LW3 is built to offer large direct part marking. The enclosure has one of the best indoor heights: it can host parts up to 628 mm high.

In addition, this industrial laser station is equipped with a large metal table with rails and grooves for part and holder positioning.

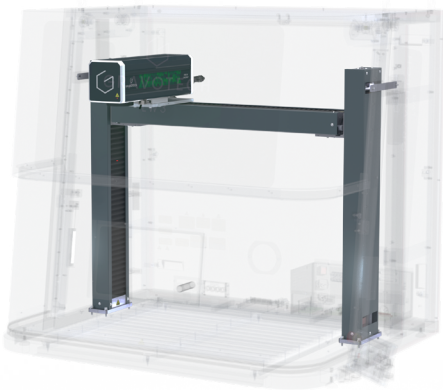
If you need to mark parts bigger than the LW3, a Class 4 override accessory can permit marking while the door is open.



### High safety certification

With its Class 1 laser certification, the LW3 ensures that the operator and workplace stays safe. The door automatically closes before the marking is launched, securing the laser beam within the enclosure. The operator can then observe the laser marking through the secure window, without needing protective glasses.

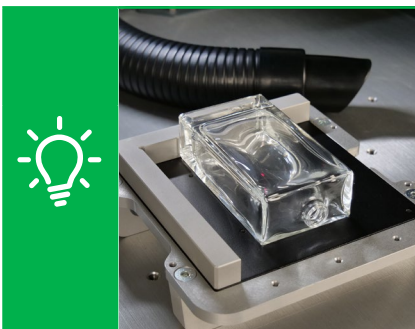
Finally, the LW3 and touchscreen are ready to pilot a filtration system, for smoke and particle extraction.



### ZX bridge option

The LW3 is also available with a ZX bridge configuration, that enables the laser head to move along those 2 axes.

It can now mark very large parts from one end to the other, extending the effective marking area from 300 x 300 mm to 875 x 300 mm (11.81 x 11.81 to 34.45 x 11.81 in).



## PERSONALIZATION WITH LW3

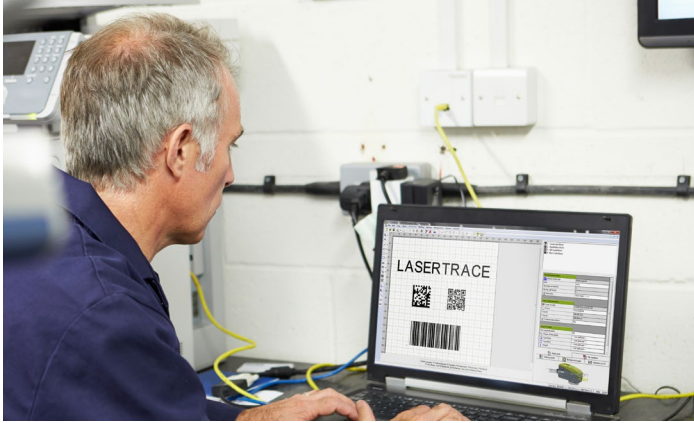
Thanks to its spacious working space and set of accessories\*, the LW3 combines the speed of galvo technology with the endless possibilities of personalization. With its protective enclosure, you can comfortably engrave large batches of gifts, metal bottles, pens, and jewelry, quickly enhancing the perceived value of your products.

\*Rotary device, pin table, jigs, easy fix pack.

LEARN MORE ABOUT LW3

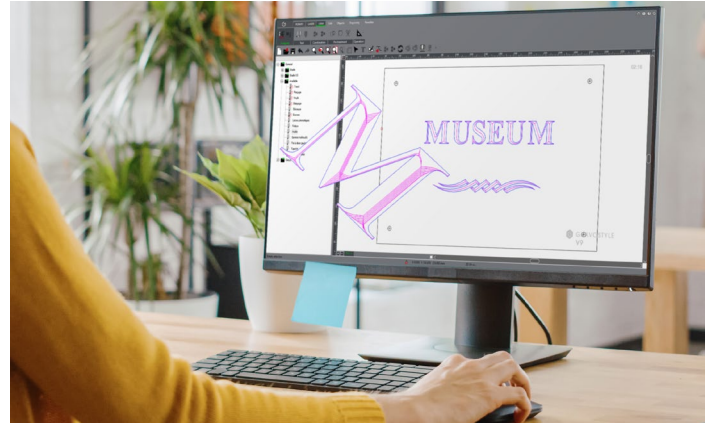


## SOFTWARE



### Lasertrace

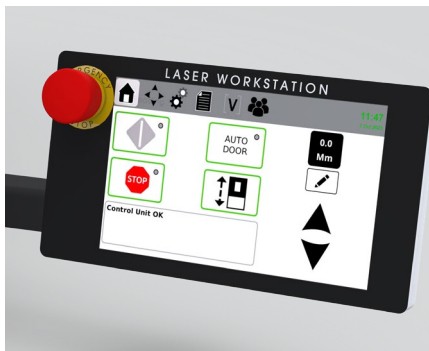
- All 2D code formats: Datamatrix, QR codes, UID and UDI, 1D-2D barcodes, etc.
- Serial numbering and codification: counter, variables, shift codes, timestamping, etc.
- Multilingual & Unicode
- Library of pre-sets by material, marking colour chart
- Link to databases: ODBC, Excel, ASCII, etc.
- Import PLT, PDF, DXF, SVG, DWG files
- Job control: auto log files, historic, duplicates, quality check



### Gravostyle™

- Import, create and retouch your logos, texts, photos
- Engraving several items at once with variables, in relief and 3D
- Compatible with all file types: EPS, JPEG, PNG, BMP, PDF, DXF, etc.
- Advanced engravings: photos, bas-relief, specific tool path
- Built-in wizards and tutorial videos
- Mark with any font in any language

## EQUIPMENT



Intuitive touchscreen  
computer-free automatic mode



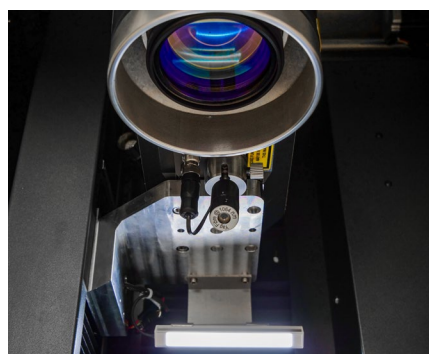
Fume extraction to protect users  
from dust and smoke



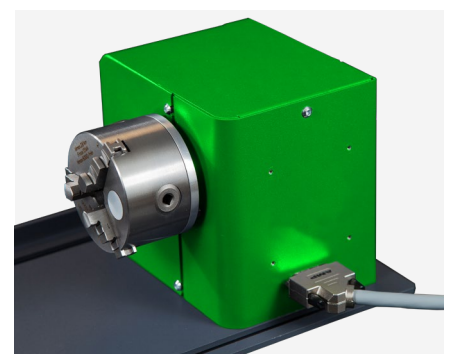
Barcode / 2D reader



3D marking

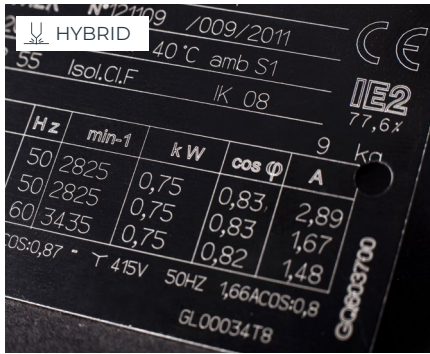


Focusing diode



Rotary device  
for cylindrical part marking

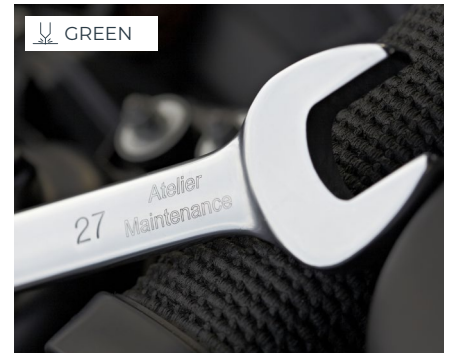
# APPLICATIONS



ID plates



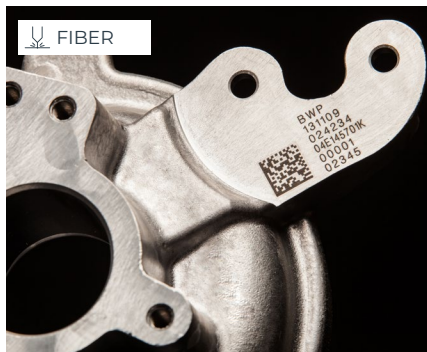
General mechanics



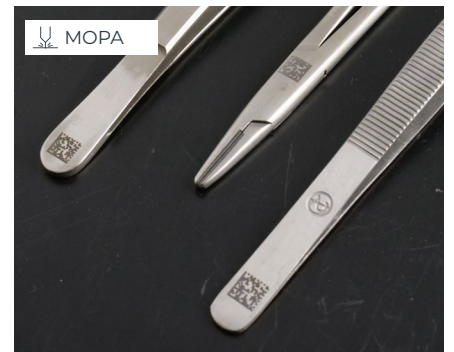
Tools



Electrical components



Automotive & aerospace



Medical

# SERVICE & SUPPORT



## Training

Standard or customized training sessions, at your place or online.



## Technical support

Gravotech experts dedicated to support and guide you.



## Maintenance

Gravotech has established a dedicated program for each machine type, including cleaning, adjustments, safety checks and more.

MAKE YOUR SAMPLES



# TECHNICAL DATA

## LW3

Model	LW3 FIBER	LW3 GREEN	LW3 HYBRID	LW3 MOPA
<b>Laser technology</b>	Fiber 1,064 nm	DPSS 532 nm	DPSS 1,064 nm	MOPA 1,064 nm
<b>Power</b>	20 / 30 / 50 W	5 / 10 W	10 / 20 W	30 / 60 W
<b>Peak power</b>	10 kW	70 kW	60 kW	<b>30 W:</b> 16 kW <b>60 W:</b> 22 kW
<b>Frequency</b>	30-60 kHz or 2-200 kHz	10-100 kHz	10-100 kHz	1-4000 kHz
<b>Marking area - Available lenses</b>	<b>F100:</b> 65 x 65 mm (2.56 x 2.56 in) <b>F160:</b> 110 x 110 mm (4.33 x 4.33 in) <b>F254:</b> 175 - 175 mm (6.89 x 6.89 in) <b>F330:</b> 205 x 205 mm (8.07 x 8.07 in)	<b>F160:</b> 110 x 110 mm (4.33 x 4.33 in) <b>F254:</b> 150 x 150 mm (5.9 x 5.9 in)	<b>F160:</b> 110 x 110 mm (4.33 x 4.33 in) <b>F254:</b> 175 x 175 mm (6.89 x 6.89 in)	<b>F100:</b> 65 x 65 mm (2.56 x 2.56 in) (on request) <b>F160:</b> 110 x 110 mm (4.33 x 4.33 in) <b>F254:</b> 175 - 175 mm (6.89 x 6.89 in) <b>F330:</b> 205 x 205 mm (8.07 x 8.07 in) (on request)
<b>Z axis type</b>	Motorized & programmable			
<b>Marking speed</b>	Up to 4,000 mm/s (157.48 in/s)			
<b>Max. object weight</b>	50 kg (110.23 lbs)			
<b>Laser safety classification</b>	Class 1 Door Closed / Class 2M door open (Aiming Diode)			
<b>Machine dimensions (L x W x H)</b>	<b>Standalone:</b> 1,213 x 1,023 x 1,120 mm (47.756 x 40.276 x 44.094 in) <b>With trolley:</b> 1,213 x 1,023 x 2,120 mm (47.756 x 40.276 x 83.465 in)			
<b>Power consumption rate</b>	800 W			
<b>Rated voltage</b>	100 - 240 VA			
<b>Machine weight (without laser)</b>	<b>With Z-axis:</b> 160 kg (352.74 lbs) <b>With ZX bridge:</b> 200 kg (440.92 lbs)			
<b>Max. object size (L x W x H)</b>	810 x 720 x 628 mm (31.89 x 28.35 x 24.72 in) (depending on the focal length)			
<b>Operating temperature</b>	10-40°C (50-104°F)	15-35°C (59-95°F)	15-35°C (59-95°F)	10-40°C (50-104°F)
<b>Humidity level</b>	10-85%			
<b>X Axis type</b>	Available in ZX configuration, motorized & programmable			
<b>Z axis stroke</b>	<b>Standard:</b> 295 mm (11.614 in) <b>ZX configuration:</b> 575 mm (22.638 in)			
<b>X axis stroke</b>	575 mm (22.64 in) (in ZX configuration)			
<b>Communication interfaces (standard)</b>	Ethernet TCP/IP; Terminal block 8I / 8O; Laser Safety Dedicated I/O; RS232; USB			



[contact@gravotech.com](mailto:contact@gravotech.com)  
 +33 (0) 4 78 55 85 50  
[www.gravotech.com](http://www.gravotech.com)

**GRAVOTECH MARKING**  
 466 rue des Mercières - Z.I. Perica  
 69140 Rillieux-la-Pape  
 France

Distributed by:



Follow us:



gravotech.off



Gravotech Group



Gravotech



Gravotech - Gravograph